

Fold Down Sleepers: EV, Rema, Leda, Max, (including; *Florin, *Harmony, *Tranquility Series (*) Discontinued

What to expect:

Disassembly Time: 15-20 minutes (small) 20-30 minutes (large) for component disassembly.
(allow additional 20-30 minutes for complete detailed disassembly)

Tools Needed:

- Personal Protection Equipment (Safety Glasses)
- Wrenches/Ratchet w/sockets (7/16")
- Torx Bit (T30)
- Screwdrivers (Phillips #2 - #3)
- Utility Knife
- Rubber Mallet

Material Content and associated Components (typical):

- **Wood** (plywood, solid): *Base, Arm, Back Frames*
- **Metal** (♻️ steel): *Support Tubes, Drawer Glides, Mounting Brackets, Hardware*
- **Poly Foam** with/without Poly fiber: *Base, Back, Seat, and Arms*
- **Textile** (fabric/vinyl): *All Upholstered components*
- **Plastic** (general): *Casters, Drawer liner, Concealment plate (Recliners), Mechanism bushing, Foot Levers (Lock/Steer), Cable release Handle, Recliner Handle Bezel (Arm), Foot Control Pad (Trendelenburg)*
- **Polyurethane Rubber:** *Arm Caps*
- **Antimicrobial Material/Moisture Barrier:** (Sewn to specific Arms, Backs, and Seats)
- **Cardboard** (♻️): (as required – Base, Arms, Back)

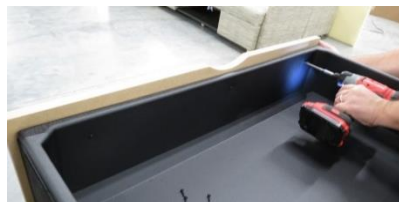
Disassembly: Drawers/Glide



(Max: 1378 Showing)
Pull drawer completely open and squeeze the bottom release lever (arrow) and lift the drawer out.



(*TR1170 Showing)
Pull each drawer completely open.



(Max: 1378 Showing)
Use a small Phillips screwdriver to remove (6) screws and lift out the drawer liner.



(*TR1170 Showing)
Carefully separate the drawer assembly from the drawer glides.



(Max: 1378 Showing)
To remove the drawer glide lock assembly, Use a #2 Phillips screwdriver to remove (2) screws from each lock assembly.



(*TR1170 Showing)
Use a #2 Phillips screwdriver to remove (8) screws and separate each drawer rail.



(Max: 1378 Showing)
To remove each drawer glide, Use a #3 Phillips screwdriver to remove (3) screws (arrows) from each lock assembly.

Disassembly: Caster/Leg



(Max Showing)
Place the sleeper on it's back, use #3 Phillips screwdriver to remove each mounting bolt, caster, and plastic washer.



(*TR1170 Showing)
Use 7/16" socket to remove (4) mounting bolts for each caster.



(Max Showing)
Remove white plastic guild cap, then use #2 Phillips screwdriver to remove mounting bolts for each wood leg.



(*TR1170 Showing)
Use #2 Phillips screw driver and remove (2) caster mounting plate bolts.



(*TR1170 Showing)
Remove (2) white plastic guild caps, then use #2 Phillips screwdriver to remove (2) bolts w/washers.

Disassembly: Lock/Steer Assembly (Option)



(Max Showing)
1. Use utility knife to cut away the bottom dust cover to allow access to the lock assembly.



(Max Showing)
2. Use 5/32 Allen wrench to loosen the foot pedal mounting bolt, and remove pedal.



(Max Showing)
3. Use #2 Phillips screwdriver to remove (3) mounting screws for plastic cover plate.



(Max Showing)
4. Remove the spring clip from both ends of the side link and remove link and pivot pins.



(Max Showing)
5. Use 7/32 Allen wrench to loosen the set screw for each collar (arrow) and pull out all Hex rods, and collars.



(Max Showing)
6. Remove each stem caster.

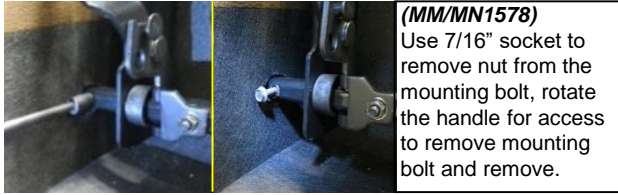


(Max Showing)
7. Use #2 Phillips screwdriver to remove (4) mounting bolts for each caster mounting plate.

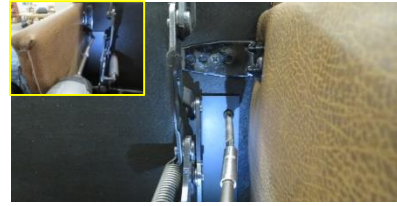


(Max Showing)
8. Use #2 Phillips screwdriver to remove (4) mounting screw and rotate the caster and remove both bracket and caster.

Disassembly: Kick-out Mechanism (Per Side)



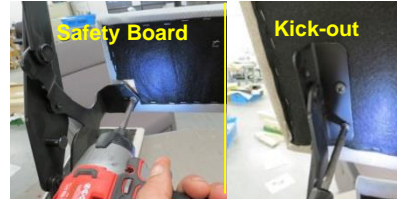
(MM/MN1578)
Use 7/16" socket to remove nut from the mounting bolt, rotate the handle for access to remove mounting bolt and remove.



(MM/MN1578)
Use #3 Phillips screwdriver to remove (2) mounting bolts (per side).



(MM/MN1578)
Carefully remove the mechanism (w/kick-out/safety board) as (handle side 1st and then slide drive tube from opposite end.



(MM/MN1578)
Use #3 Phillips screwdriver to remove (4) mounting bolts (Kick-out), and (2) mounting bolts (Safety Board).

Disassembly: Seat (typical)



(MM/MN1278-1578)
Use #3 Phillips screwdriver to remove (4) seat mounting bolts (per seat).



(*TR1170 Showing)
Use #3 Phillips screwdriver to remove (4) seat mounting bolts (per seat).



(MM/MN1578-1778)
Center Panel: Use #3 Phillips screwdriver to loosen all mounting bolts. Remove mounting brackets.

Disassembly: Center Mount/Support Tubes



(TR1170 Showing)
1. Use #3 Phillips to remove (3) mounting bolts (arrows) to remove the center mounting support.



(TR1170 Showing)
1. Use #3 Phillips to remove (8) mounting bolts (per tube) to remove (3) support tubes.

Disassembly: Center Console/Table

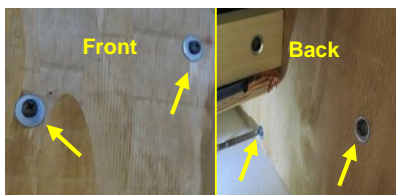


(Max 1678/1778 Showing)
Use #3 Phillips screwdriver to loosen (4) mounting bolts.



(Max Showing)
Use #3 Phillips screwdriver to remove (4) mounting bolts (arrows) for the table top.

Disassembly: Arm Assembly



(Max Showing)
Use #3 Phillips screwdriver to remove (4) mounting bolts (arrows) per side. (2) Front, (2) Back



(TR1170 Showing)
Use #3 Phillips screwdriver to remove (3) mounting Bolts (arrows) per side.

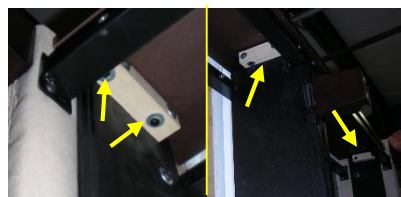


(TR1170 Showing)
3. Use #2 Phillips screwdriver to remove (3) mounting screws for drawer glide mounting plate.

Disassembly: Laminate/Uph. Front Panels w/brackets



(Max Showing)
Center Panel: Use #3 Phillips screwdriver to loosen all mounting bolts. Remove Panel and mounting brackets.



(TR1170 Showing)
Use #3 Phillips screwdriver to remove all mounting bolts. Remove front panel and mounting brackets.

Disassembly: Fold Down Back Cushions



(Max Showing)
Use a utility knife and carefully cut fabric along the bottom front edge (above staples) and remove back cushion assembly.



(TR1170 Showing)
Use #2 Phillips screwdriver to remove mounting screws and plastic strip.