



Silicone Card

L A  B O Y[®]
H E A L T H C A R E



Hayden



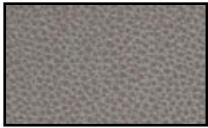
hayden | field



brown sugar



mist



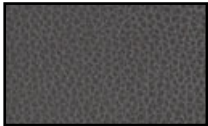
steel



autumn



aquamarine



shale



chalk



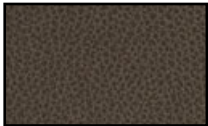
latte



merlot



dark sky



cinder



fawn



earth



port



atlantic

Santa Fe



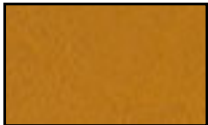
santa fe | lotion



linseed



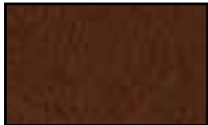
antelope



chaps



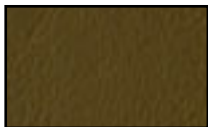
saddle bag



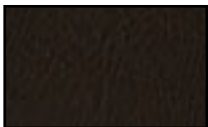
mesquite



cordovan



moss



musk



thunder



espresso



haze



scarlet

Silex



silex | port



peacock



leaf



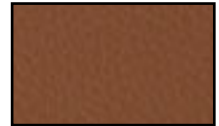
golden rod



sea foam



moss



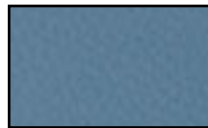
saddle



snow



metal



haze



hot pink



chocolate



ivory



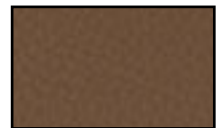
ash



cadet



mulberry



malt



stone



persimmon



ocean



eggplant



khaki



new sand



penny



cobalt



raisin



espresso



mist



brick



ink



sunshine



black



pewter



jelly apple



celery

Silicone Card

Product Specifications - Hayden | Santa Fe | Silex

Technical Specs

Surface Composition	100% Silicone
Finished Width	54" min.
Weight at 54 inches	25.6 oz./yd. \pm 10%
Thickness	1.2 mm \pm 10%
Total Weight	17.3 oz./yd. ² \pm 10%
Backing Composition	100% Polyester
Backing Weight	11.0 oz./yd. ² \pm 10%
Repeat	None
Railroaded	No
Put-up	30 yards
Cleaning Code	W/S

Values

Test Method

ASTM D 751-06
ASTM D 751-06
ASTM D 751-06
ASTM D 751-06
ASTM D 751-06
ASTM D 751-06
ASTM D 751-06

Performance

Grab Tensile	200 lbs./in. x 200 lbs./in. min.
Trap Tear	30 lbs./in. x 30 lbs./in. min.
Seam Strength	90 lbs./in. x 90 lbs./in. min.
Adhesion	4 lbs./in. x 4 lbs./in. min.
Stretch @ 15# (MDxCD)	14% x 25%
Flex Resistance	100,000 Cycles
Blocking	No. 1 - Pass
Crock Resistance	Dry - 5; Wet - 5
Wyzenbeek Abrasion	200,000 cycles, #10 cotton duck
Colorfastness to Light	1,500 hours
Colorfastness to Water: Sea	Shade - 5; Staining - 5
Mildew Resistance	Pass
Blue Dye Transfer Resistance	Dry - 4; Wet - 3-4
Biocompatibility - Vitro Cytotoxicity	Pass
Biocompatibility - Irritation and Skin Sensitization	Pass
Chemical Cleaner Resistance	Pass
Cold Crack (Roller Method)	-40° F

Values

Test Method

ASTM D 751-06
ASTM D 751-06
ASTM D 751-06
ASTM D 751-06
ASTM D 751-06
ASTM D 2097
FTMS 191A-TM5872
AATCC 8-2016
ASTM D 4157-13
ASTM D 4329-05
AATCC 106-2013
ASTM G-21
LP-463KC-04-03
ISO 10993-5-2009
ISO 10993-10-2010
ANSI BIFMA HCF 8.1-2017 Sections 6 & 7
CFFA-6a

Flammability

California Bulletin 117-2013, Section 1
Bs5852 Crib 5
UFAC Class 1
NFPA 260
FMVSS #302
IMO A.652 (16) 8.2 & 8.3

Values

Pass
Pass
Pass
Pass
Pass
Pass

Environment

1. No solvents, polyvinyl chloride, plasticizers, phthalates, stabilizers, heavy metals or Bisphenol A
2. No persistent organic pollutants. No formaldehyde. No toxic by-products.
3. No chemical flame retardants
4. RoHS, REACH, and LEED compliant
5. Passes CA 01350 VOC Emissions test

Suitable Applications: Healthcare, Hospitality

Contract, Marine, Automotive

Country of Origin: China

