

QUANTUMCOLLECTION

Interactive Card



MAYERFABRICS



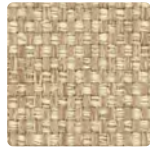
VECTOR
VE-007 Latte



MATTER
MR-007 Latte



RELATIVITY
TL465-007 Greige



GRAVITY
TL464-002 Wheat



GRAVITY
TL464-007 Bone



MATTER
MR-036 Fog



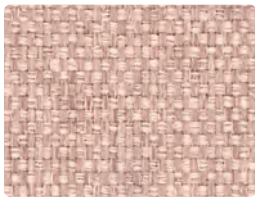
GRAVITY
TL464-017 Stone



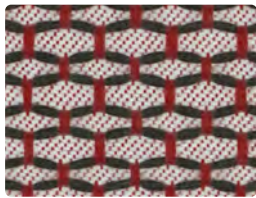
MATTER
MR-001 Raisin



VECTOR
VE-001 Raisin



GRAVITY
TL464-001 Blush



STATIC
TL466-001 Scarlet



MATTER
MR-016 Iron



RELATIVITY
TL465-001 Carmine



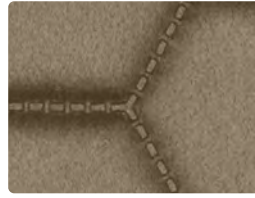
STATIC
TL466-026 Piano



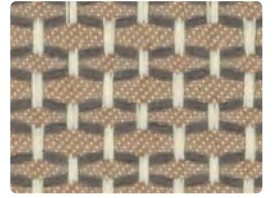
MATTER
MR-017 Snowflake



MOLECULE
MU-007 Oyster



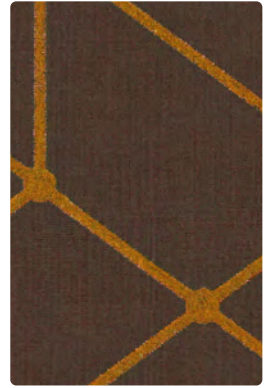
MOLECULE
MU-017 Stone



STATIC
TL466-007 Pumice



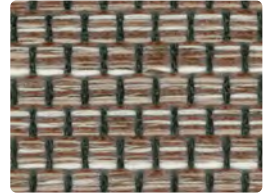
STATIC
TL466-000 Mocha



VECTOR
VE-000 Dark Copper



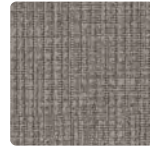
MATTER
MR-000 Espresso



RELATIVITY
TL465-000 Mocha



STATIC
TL466-006 Greige



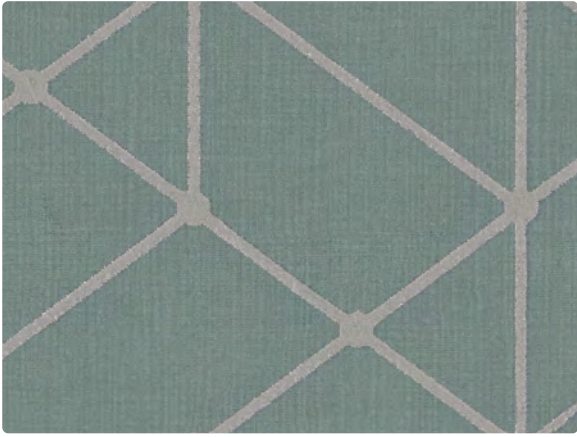
MATTER
MR-006 Steel



VECTOR
VE-006 Steel



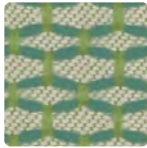
MOLECULE
MU-001 Marsala



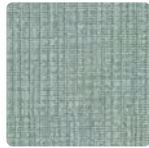
VECTOR
VE-003 Mint



MATTER
MR-013 Fern



STATIC
TL466-003 Meadow



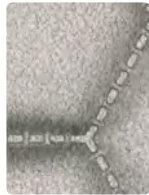
MATTER
MR-003 Mint



GRAVITY
TL464-016 Fog



RELATIVITY
TL465-004 Mineral



MOLECULE
MU-016 Aluminum



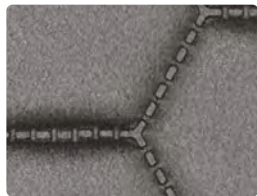
RELATIVITY
TL465-014 Oxford



VECTOR
VE-014 Sapphire



VECTOR
VE-016 Iron



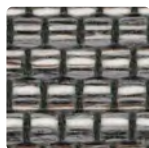
MOLECULE
MU-006 Alloy



GRAVITY
TL464-006 Smoke



MATTER
MR-026 Char



RELATIVITY
TL465-006 Metal



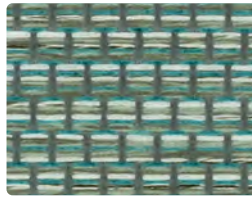
GRAVITY
TL464-013 Lichen



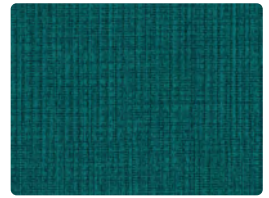
STATIC
TL466-016 Granite



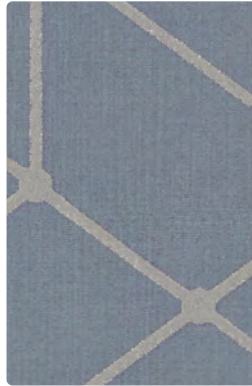
GRAVITY
TL464-003 Pistachio



RELATIVITY
TL465-003 Eucalyptus



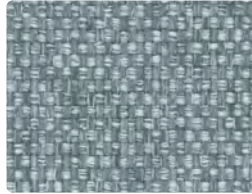
MATTER
MR-023 Ocean



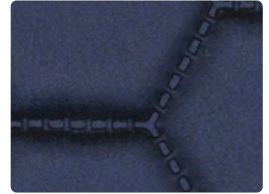
VECTOR
VE-004 Haze



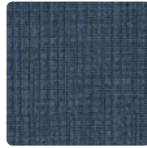
MATTER
MR-004 Haze



GRAVITY
TL464-004 Spa



MOLECULE
MU-004 Midnight



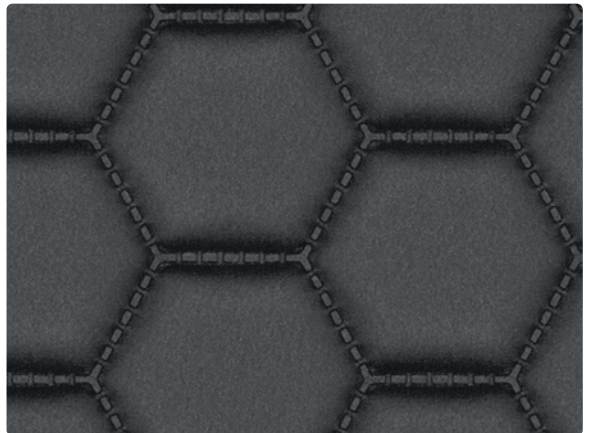
MATTER
MR-014 Sapphire



STATIC
TL466-004 Bluestone



MATTER
MR-024 Ink



MOLECULE
MU-026 Charcoal

TECHNICAL INFORMATION

Quantum Collection | Interactive Card

Pattern 54"	Content and Backing	Certifications	Weight/ Linear Yd.	Pattern Repeat	Finish	Abrasion Wyzenbeek	Light- Fastness	Flammability	Cleaning Code
GRAVITY	87% Polyester, 13% Graffiti-Free [®] Tekloom [®] TPE Backing: Polyester	GREENGUARD Gold	16 oz.	Non-Matching	WRITE AWAY™ - Soil & Stain Resistant Top Coat with Ink Resistant Technology	1,000,000 [^] Double Rubs	40 hours	Cal. 117-2013 NFPA 260/UFAC Class 1 IMO A.652(16)8.2	WS, BC, CFC
MATTER <i>Directional</i>	40% Polyurethane Polycarbonate - PVC Free face, 60% Polyester backing	GREENGUARD	16 oz.	None	WRITE AWAY™ - Soil & Stain Resistant Top Coat with Ink Resistant Technology	200,000 [^] Double Rubs	200 hours	Cal. 117-2013 NFPA 260/UFAC Class 1 IMO A.652(16)8.2	WS, BC, CFC
MOLECULE <i>Directional Railroaded</i>	24% Polyurethane Polycarbonate - PVC Free face, 76% Polyester backing	GREENGUARD	27.5 oz.	2.25" H, 1.3" V Random Match	WRITE AWAY™ - Soil & Stain Resistant Top Coat with Ink Resistant Technology	100,000 [^] Double Rubs	200 hours	Cal. 117-2013 NFPA 260/UFAC Class 1 IMO A.652(16)8.2	WS, BC, CFC
RELATIVITY <i>Directional</i>	88% Polyester, 12% Graffiti-Free [®] Tekloom [®] TPE Backing: Polyester	GREENGUARD Gold	17 oz.	Non-Matching	WRITE AWAY™ - Soil & Stain Resistant Top Coat with Ink Resistant Technology	1,000,000 [^] Double Rubs	40 hours	Cal. 117-2013 NFPA 260/UFAC Class 1 IMO A.652(16)8.2	WS, BC, CFC
STATIC <i>Directional</i>	88% Polyester, 12% Graffiti-Free [®] Tekloom [®] TPE Backing: Polyester	GREENGUARD Gold	17 oz.	0.5" H, 0.5" V	WRITE AWAY™ - Soil & Stain Resistant Top Coat with Ink Resistant Technology	1,000,000 [^] Double Rubs	40 hours	Cal. 117-2013 NFPA 260/UFAC Class 1 IMO A.652(16)8.2	WS, BC, CFC
VECTOR <i>Directional</i>	40% Polyurethane Polycarbonate - PVC Free face, 60% Polyester backing	GREENGUARD	16 oz.	20.25" H, 10.25" V	WRITE AWAY™ - Soil & Stain Resistant Top Coat with Ink Resistant Technology	100,000 [^] Double Rubs	200 hours	Cal. 117-2013 NFPA 260/UFAC Class 1 IMO A.652(16)8.2	WS, BC, CFC

REDUCED ENVIRONMENTAL IMPACT

These products are GREENGUARD Certified or GREENGUARD Gold Certified for low chemical and particle emissions to UL standard UL 2818 and may contribute to LEED certification.

No Added FR/Antimicrobial Additives Phthalate Free

CARE AND CLEANING INFORMATION

WS: Water/Solvent Cleaner CFC: Coated Fabrics Cleaning – Refer to Mayer website for complete cleaning info.

Bleach Cleanable – 1 part bleach, 9 parts water = 10% bleach, 90% water solution. **Do not clean/disinfect fabric for longer than 10 minutes using the 10% bleach solution. Always rinse promptly with clean water after applying the bleach solution. Failure to do so will void any and all warranties.**

DYE TRANSFER DISCLAIMER

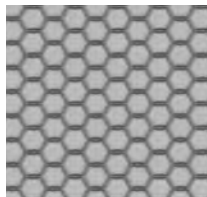
Certain clothing and accessory dyes (such as those used on denim jeans) may migrate to lighter colors. This phenomenon is increased by humidity and temperature and is irreversible. Mayer Fabrics will not assume responsibility for dye transfer caused by external contaminants. Please check compatibility when using this product in combination with painted or varnished surfaces.

ADDITIONAL INFORMATION

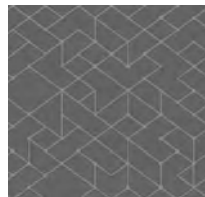
[^] Abrasion test results exceeding ACT Performance Guidelines are not an indicator of product lifespan. Multiple factors affect fabric durability and appearance retention. Warranty: Please refer to the Mayer website for warranty information by pattern. Custom Colors: All patterns can be custom colored. Minimum yardage applies. Digital Swatch Card Color Matching: Due to color variations on different monitors and color printers, actual swatch colors may vary slightly. Please request a memo sample from Mayer Fabrics to ensure proper color representation. Complete and current product information available at mayerfabrics.com.



These fabrics meet or exceed these ACT performance guidelines. *Certification Marks owned by ACT[®]



MOLECULE – Repeat:
2.25" H, 1.3" V
Random Match



VECTOR – Repeat:
20.25" H, 10.25" V

©2021
QCICD MF0921