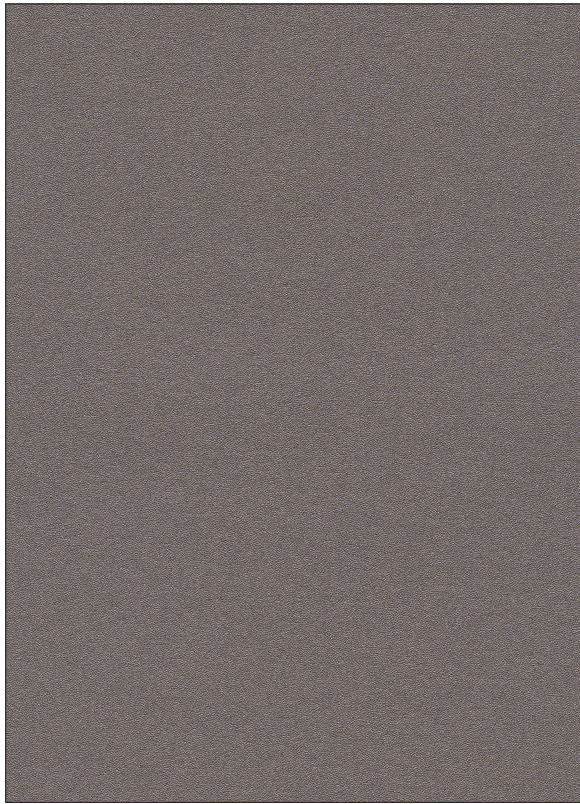
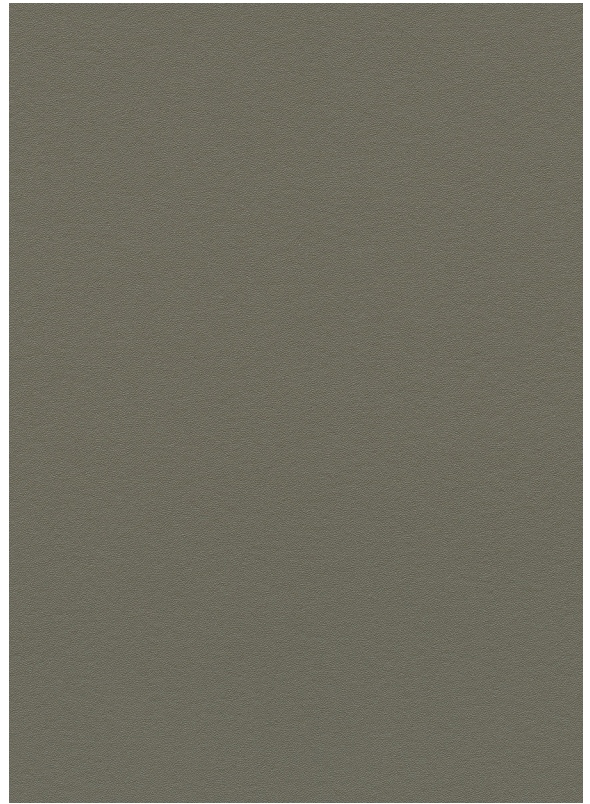


Fusion & Fusion Shimmer — Ultrafabrics



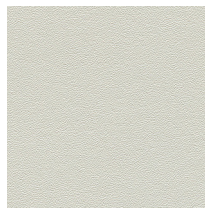
389-6516 Chroma*



500-3721 Portobello



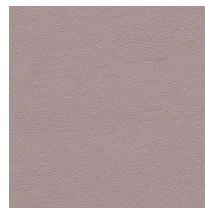
389-5854 Icicle*



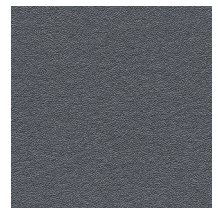
500-5771 Steam



389-3637 Copperhead*



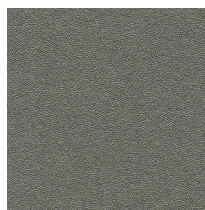
500-9442 Rose Tint



389-6514 Silverado*



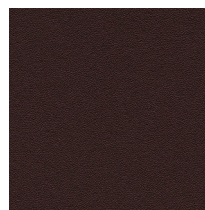
500-6513 Dime



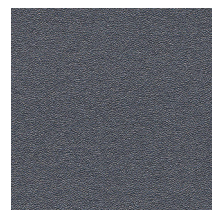
389-6515 Tin*



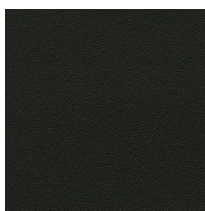
389-8255 Brushed Bronze*



500-3457 Chambord



389-2707 Frost*



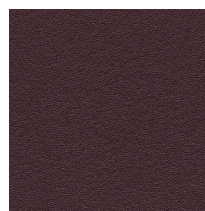
500-5721 Caviar



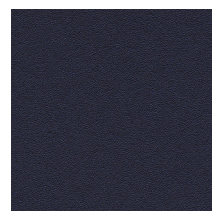
500-5621 Graphite



389-5690 Gunmetal*



389-9350 Plumberry*



500-2736 Deep Midnight

*Fusion Shimmer

Fusion & Fusion Shimmer

General Specifications

Composition:

100% Polycarbonate Polyurethane Surface
65% Polyester, 35% Rayon Backing

Weight:

Approx. 10.6 oz. Per Square Yard
Approx. 360 Grams Per Square Metre

Thickness:

Approx. 1.05 Millimetres

Width:

54 Inches / 137 Centimetres

Repeat:

None

Performance

Abrasion:

ASTM D4157 / 150,000 - 250,000 Double Rubs
(Wyzenbeek)*
BS EN ISO 12947-2 / 150,000 - 180,000 Rubs
(Martindale)*
*meets or exceeds

Hydrolysis:

14+ Weeks
ASTM D3690 Sect. 6.11 (Hydrolytic Stability)
ISO 1419 Method C (Accelerated Ageing)

Adhesion of Coating: ASTM D751

Tear Strength: ASTM D2261

Breaking Strength: ASTM D751

Tensile Strength: BS EN ISO 1421

Colorfastness

Light:

AATCC 16.3, 200 Hours, Grade 4
ISO 105 B02, Grade 6

Crocking:

AATCC 8, Grade 4-5 Wet & Dry

Flammability Requirements

- ASTM E84 (Adhered) - Class A
- CA TB 117 - Pass
- FMVSS 302 & 95/28 Annex IV - Pass
- NFPA 260 - Class 1
- UFAC - Class 1

These fabrics, when treated and/or used with other compatible furniture components, have been shown to perform under the fire test conditions of:

- ASTM E84 (Unadhered)
- IMO FTPC Part 8
- BS EN 1021 Parts 1 & 2
- BS 5852 Source 0, 1 & 5 (Cig, Match & Crib 5)

For more information on certifications and standards, sustainability, as well as cleaning and care instructions, please visit our website.